

# MSBA Enrollment Projection – Pentucket Regional School District

## Historic Enrollment Data (DESE)

YEAR	PK	K	1	2	3	4	5	6	7	8	9	10	11	12	K-12	K-6	7-8	9-12
1993-94	52	235	248	275	261	258	255	208	204	205	206	163	165	145	2,828	1,740	409	679
1994-95	108	238	253	254	280	267	259	249	208	205	168	194	166	157	2,898	1,800	413	685
1995-96	82	270	269	258	262	278	258	258	257	207	196	163	182	156	3,014	1,853	464	697
1996-97	87	265	301	281	271	265	299	264	268	252	193	180	166	169	3,174	1,946	520	708
1997-98	95	245	278	296	283	273	270	303	273	262	228	179	186	165	3,241	1,948	535	758
1998-99	102	248	261	276	295	292	271	268	300	280	247	217	163	175	3,293	1,911	580	802
1999-00	104	258	253	253	276	306	281	271	273	304	241	236	207	163	3,322	1,898	577	847
2000-01	109	248	289	250	258	284	310	279	279	277	256	228	227	199	3,384	1,918	556	910
2001-02	14	254	265	281	260	261	290	303	278	282	229	255	218	213	3,389	1,914	560	915
2002-03	72	256	257	260	276	263	268	275	309	276	247	235	241	210	3,373	1,855	585	933
2003-04	108	256	271	256	257	281	270	268	311	269	252	237	222	230	3,380	1,859	580	941
2004-05	70	259	263	277	258	267	276	272	263	283	275	233	232	218	3,376	1,872	546	958
2005-06	114	254	284	264	274	256	267	266	279	260	251	247	216	225	3,343	1,865	539	939
2006-07	130	212	258	269	266	289	265	261	264	274	199	216	245	215	3,233	1,820	538	875
2007-08	70	245	232	325	226	263	288	257	264	263	233	184	216	228	3,224	1,836	527	861
2008-09	104	235	250	234	266	284	265	285	262	269	196	224	197	209	3,176	1,819	531	826
2009-10	93	209	254	260	237	269	282	264	282	259	205	199	228	185	3,133	1,775	541	817
2010-11	89	191	224	248	262	235	265	276	260	277	187	196	198	219	3,038	1,701	537	800
2011-12	85	191	204	226	256	259	237	261	266	258	221	189	190	187	2,945	1,634	524	787
2012-13	89	185	186	212	229	252	255	238	262	264	190	211	195	187	2,866	1,557	526	783
2013-14	87	140	193	194	209	233	254	248	241	262	198	185	213	186	2,756	1,471	503	782
2014-15	78	150	140	199	196	213	233	255	251	238	192	191	177	200	2,635	1,386	489	760
2015-16	73	158	155	137	204	186	209	228	244	252	159	186	188	174	2,480	1,277	496	707

## Historic Birth Data (MA Department of Public Health)

Maternal Age	1989	1990	1991	1992	1993	1994	1995	1996	1997	1998	1999	2000	2001	2002	2003	2004	2005	2006	2007	2008	2009	2010	2011	2012	2013
10-14 Yrs	0	0	0	0	0	0	0	0	0	0	0	0	0	0	0	0	0	0	0	0	0	0	0	0	0
15-19 Yrs	0	0	0	0	0	0	0	0	0	0	0	0	0	0	0	0	0	0	0	0	5	0	0	0	0
20-24 Yrs	20	21	15	15	8	18	10	9	16	9	9	0	6	0	11	0	14	11	6	12	10	0	5	5	15
25-29 Yrs	77	74	48	52	44	61	52	62	49	45	48	34	24	25	22	23	26	24	19	27	20	21	26	23	40
30-34 Yrs	74	64	65	66	71	88	87	100	105	106	91	91	98	89	75	70	53	59	44	50	45	40	41	36	48
35-39 Yrs	21	26	25	22	29	33	33	37	59	51	52	48	52	57	45	46	53	51	38	40	37	29	27	13	32
40-44 Yrs	0	0	0	0	0	0	0	5	0	7	5	5	5	6	12	0	0	5	5	0	5	0	5	5	5
Total Births	203	195	162	180	164	213	199	230	240	226	215	193	198	196	171	155	165	165	128	137	129	106	115	100	147

# MSBA Enrollment Projection – Pentucket Regional School District

## Female Population Data

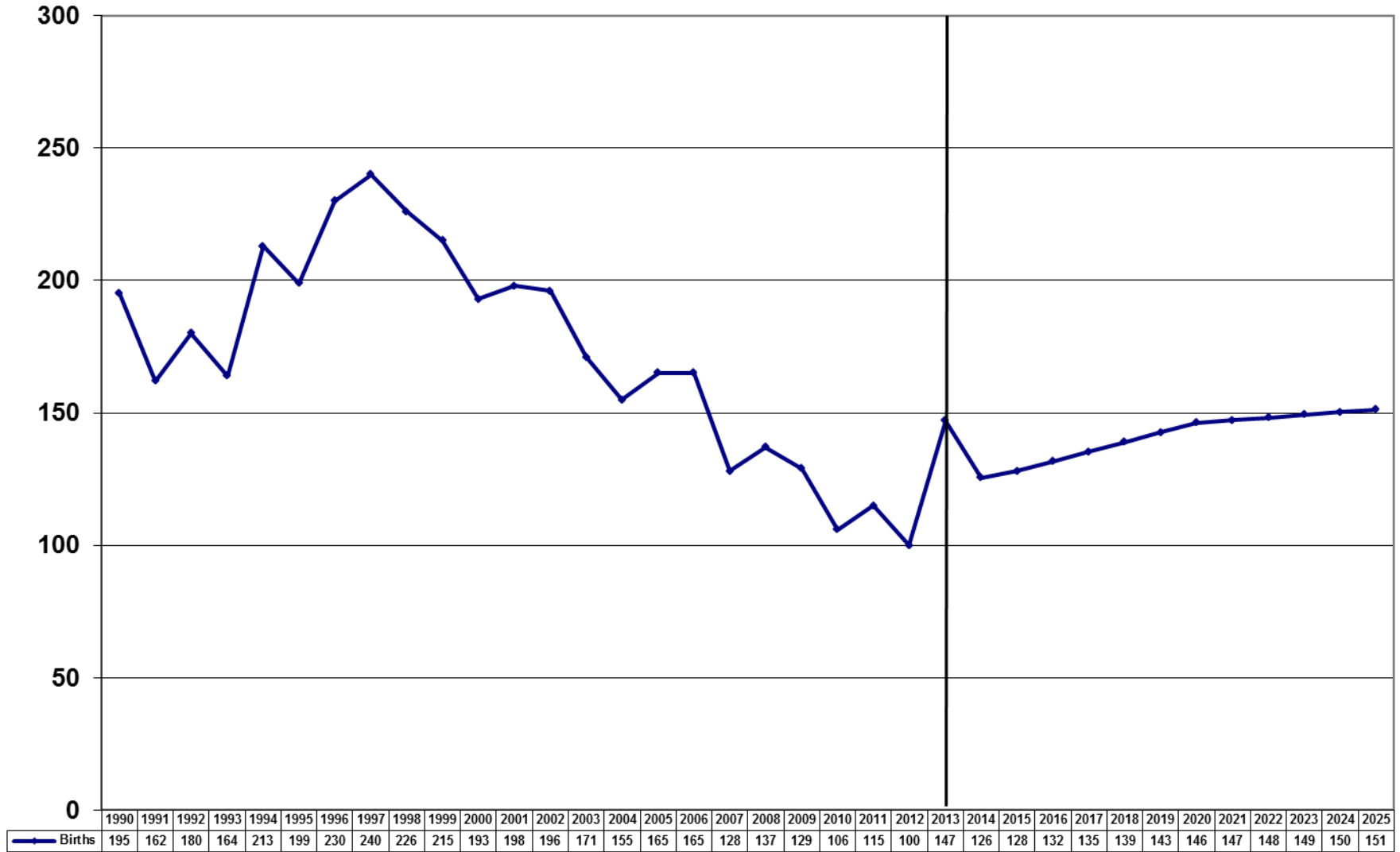
Maternal Age	US Census Data			U Mass Donohue Institute				2011-2013 Avg Fertility Rate
	1990	2000	2010	2015	2020	2025	2030	
10-14 Yrs	500	678	717	669	518	438	466	0.00%
15-19 Yrs	391	499	584	546	508	369	297	0.00%
20-24 Yrs	340	237	328	371	346	313	166	2.62%
25-29 Yrs	459	262	260	324	362	340	311	11.48%
30-34 Yrs	663	633	280	399	460	491	470	14.22%
35-39 Yrs	683	826	495	313	426	478	505	6.32%
40-44 Yrs	680	858	827	575	410	515	562	0.78%
Total Females	6,937	8,276	8,744	8,734	8,764	8,712	8,528	1.38%

## Birth Projections

Maternal Age	2014	2015	2016	2017	2018	2019	2020	2021	2022	2023	2024	2025	2026	2027	2028	2029	2030
10-14 Yrs	0	0	0	0	0	0	0	0	0	0	0	0	0	0	0	0	0
15-19 Yrs	0	0	0	0	0	0	0	0	0	0	0	0	0	0	0	0	0
20-24 Yrs	9	10	10	9	9	9	9	9	9	9	8	8	7	7	6	5	4
25-29 Yrs	36	37	38	39	40	41	42	41	41	40	40	39	38	38	37	36	36
30-34 Yrs	53	57	58	60	62	64	65	66	67	68	69	70	69	69	68	67	67
35-39 Yrs	22	20	21	23	24	26	27	28	28	29	30	30	31	31	31	32	32
40-44 Yrs	5	4	4	4	4	3	3	3	4	4	4	4	4	4	4	4	4
Totals	126	128	132	135	139	143	146	147	148	149	150	151	150	148	146	145	143

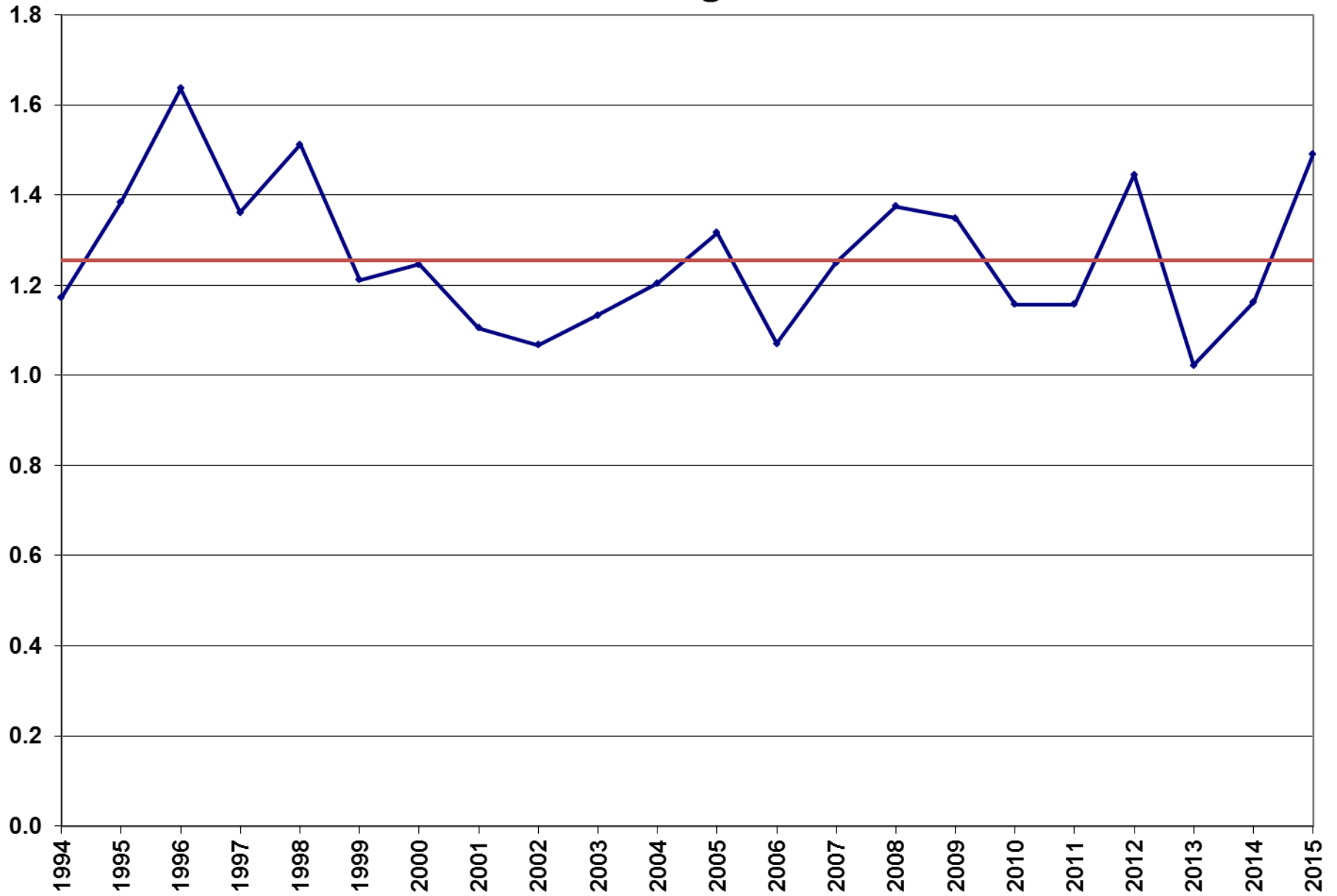
# MSBA Enrollment Projection – Pentucket Regional School District

## Births



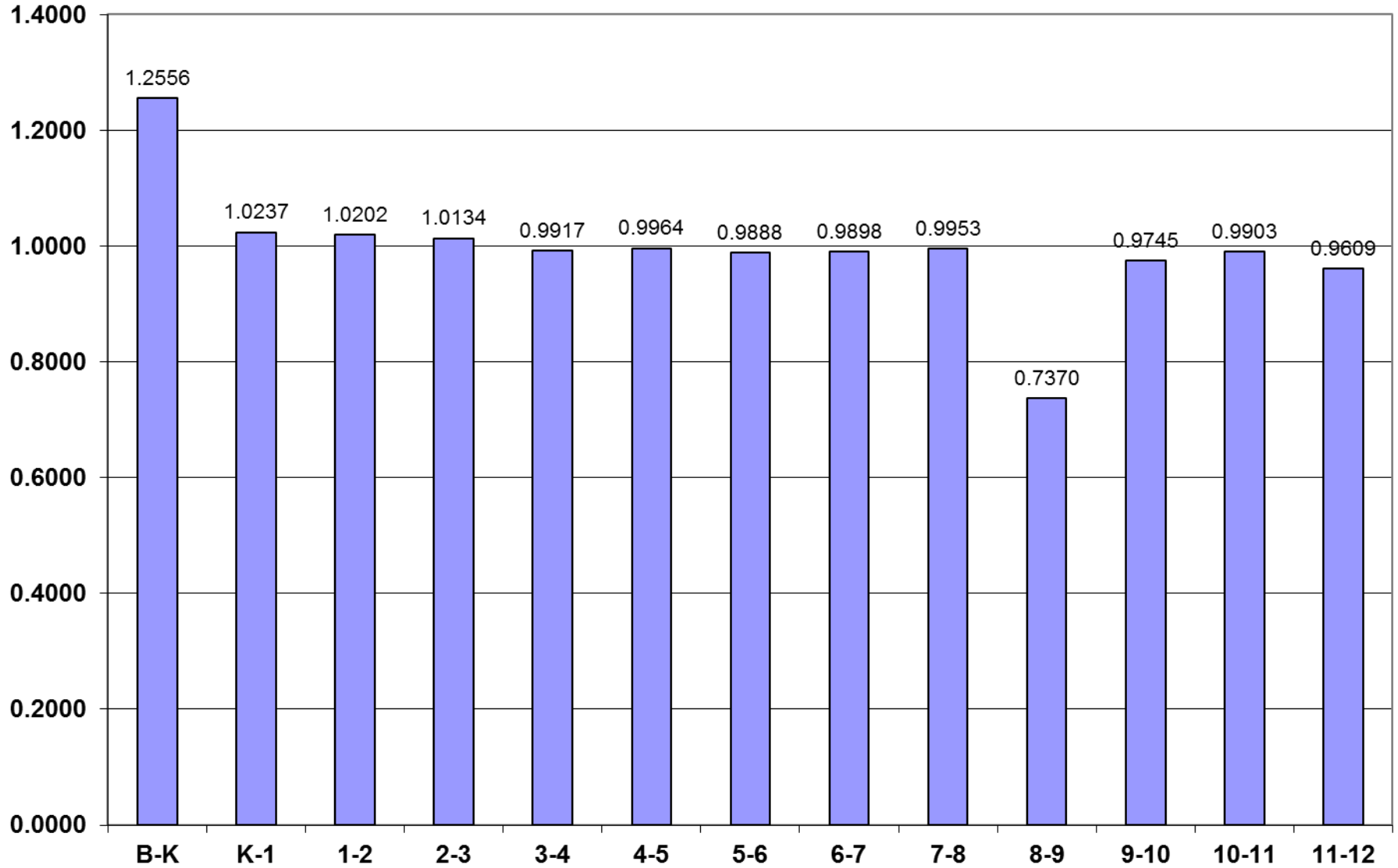
# MSBA Enrollment Projection – Pentucket Regional School District

## Birth to Kindergarten Ratio



# MSBA Enrollment Projection – Pentucket Regional School District

## Grade-to-Grade Ratios - 5 Yr Average



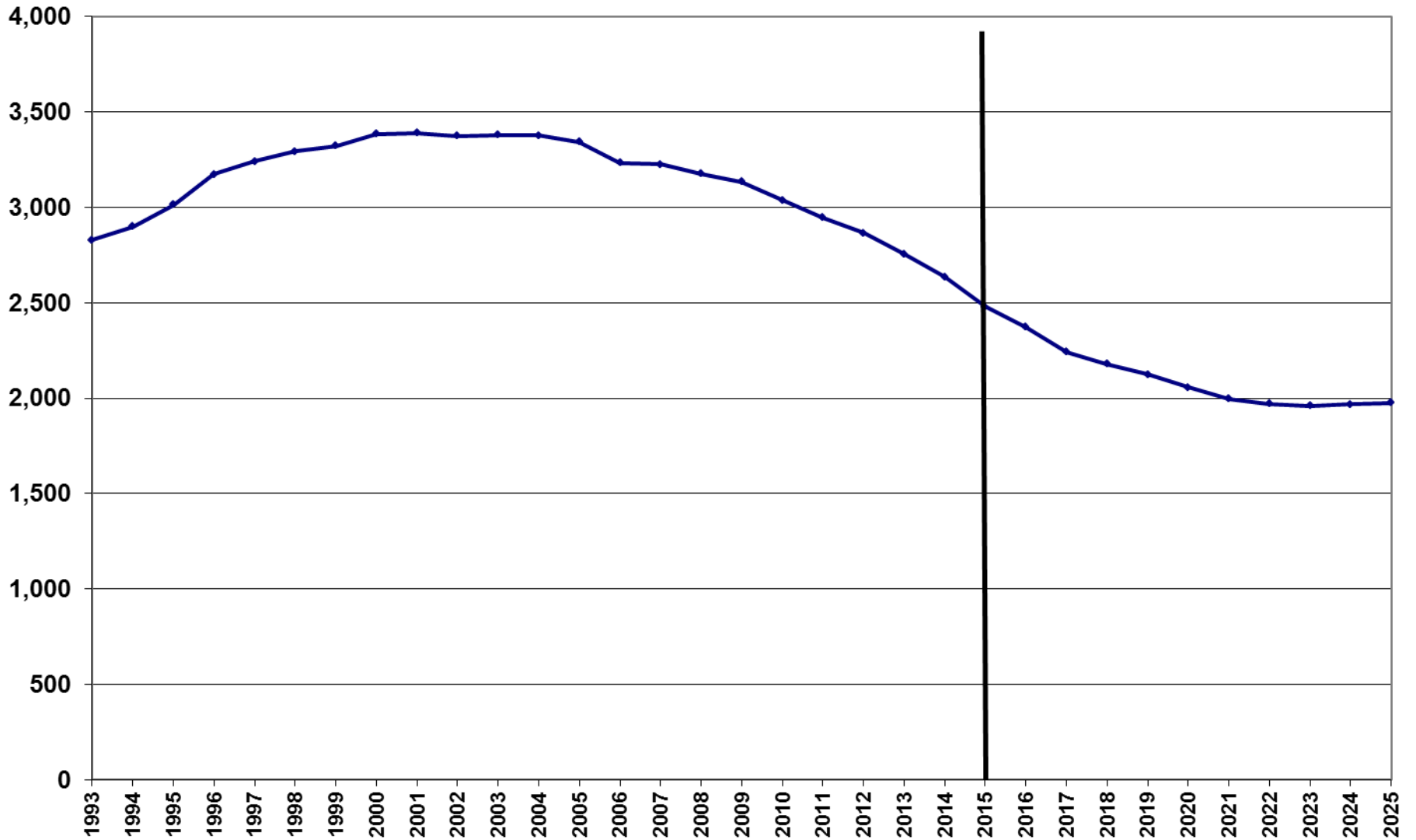
# MSBA Enrollment Projection – Pentucket Regional School District

## Base Enrollment Projections

YEAR	K	1	2	3	4	5	6	7	8	9	10	11	12	TOTAL	K-6	7-8	9-12
1993	235	248	275	261	258	255	208	204	205	206	163	165	145	2,828	1,740	409	679
1994	238	253	254	280	267	259	249	208	205	168	194	166	157	2,898	1,800	413	685
1995	270	269	258	262	278	258	258	257	207	196	163	182	156	3,014	1,853	464	697
1996	265	301	281	271	265	299	264	268	252	193	180	166	169	3,174	1,946	520	708
1997	245	278	296	283	273	270	303	273	262	228	179	186	165	3,241	1,948	535	758
1998	248	261	276	295	292	271	268	300	280	247	217	163	175	3,293	1,911	580	802
1999	258	253	253	276	306	281	271	273	304	241	236	207	163	3,322	1,898	577	847
2000	248	289	250	258	284	310	279	279	277	256	228	227	199	3,384	1,918	556	910
2001	254	265	281	260	261	290	303	278	282	229	255	218	213	3,389	1,914	560	915
2002	256	257	260	276	263	268	275	309	276	247	235	241	210	3,373	1,855	585	933
2003	256	271	256	257	281	270	268	311	269	252	237	222	230	3,380	1,859	580	941
2004	259	263	277	258	267	276	272	263	283	275	233	232	218	3,376	1,872	546	958
2005	254	284	264	274	256	267	266	279	260	251	247	216	225	3,343	1,865	539	939
2006	212	258	269	266	289	265	261	264	274	199	216	245	215	3,233	1,820	538	875
2007	245	232	325	226	263	288	257	264	263	233	184	216	228	3,224	1,836	527	861
2008	235	250	234	266	284	265	285	262	269	196	224	197	209	3,176	1,819	531	826
2009	209	254	260	237	269	282	264	282	259	205	199	228	185	3,133	1,775	541	817
2010	191	224	248	262	235	265	276	260	277	187	196	198	219	3,038	1,701	537	800
2011	191	204	226	256	259	237	261	266	258	221	189	190	187	2,945	1,634	524	787
2012	185	186	212	229	252	255	238	262	264	190	211	195	187	2,866	1,557	526	783
2013	140	193	194	209	233	254	248	241	262	198	185	213	186	2,756	1,471	503	782
2014	150	140	199	196	213	233	255	251	238	192	191	177	200	2,635	1,386	489	760
2015	158	155	137	204	186	209	228	244	252	159	186	188	174	2,480	1,277	496	707
2016	144	162	158	139	202	185	207	226	243	186	155	184	181	2,371	1,197	469	706
2017	126	148	165	160	138	202	183	205	225	179	181	153	177	2,241	1,122	430	690
2018	185	129	151	167	159	137	199	181	204	166	174	179	147	2,178	1,127	385	666
2019	158	189	131	153	166	158	136	197	181	150	161	173	172	2,125	1,091	378	656
2020	161	161	193	133	152	165	157	134	196	133	146	160	166	2,057	1,122	330	605
2021	165	164	165	195	132	151	163	155	134	145	130	145	154	1,997	1,135	289	574
2022	170	169	168	167	194	131	149	162	154	98	141	128	139	1,971	1,148	316	506
2023	174	174	173	170	165	193	130	148	161	114	96	140	123	1,960	1,179	309	473
2024	179	178	177	175	169	165	191	129	147	119	111	95	134	1,968	1,234	276	459
2025	184	183	182	180	173	168	163	189	128	108	116	110	91	1,975	1,233	317	425
10 yr avg	192	210	230	235	248	255	257	260	262	198	198	205	199	2,949	1,628	521	800
5 yr avg	165	176	194	219	229	238	246	253	255	192	192	193	187	2,736	1,504	513	770
2 yr avg	154	148	168	200	200	221	242	248	245	176	189	183	187	2,558	1,332	493	734
5 yr proj	155	158	160	150	163	170	176	189	210	163	164	170	169	2,194	1,132	398	665
10 yr proj	164	166	166	164	165	166	168	173	177	140	141	147	148	2,084	1,159	350	576

# MSBA Enrollment Projection – Pentucket Regional School District

## Total Enrollment



# MSBA Enrollment Projection – Pentucket Regional School District

## Enrollment by Grade Group

